



jordan fishwick

WITHINGTON
Wilmslow Road



**Wilmslow Road,
Withington, M20 3BP**
£1,450 Per Calendar Month



The Property

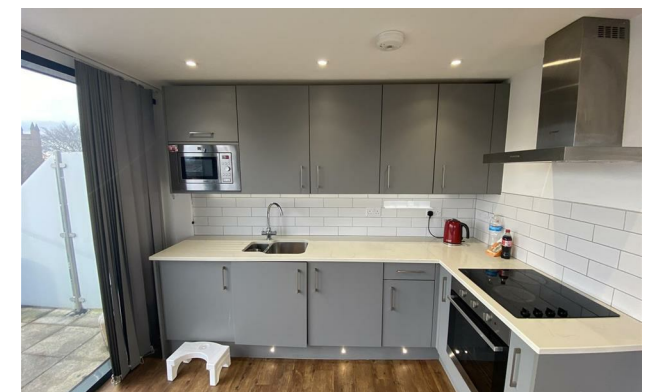
*** AVAILABLE MARCH *** A stylish and spacious, two double bedroom, two-bathroom, luxury penthouse apartment with a south westerly facing balcony and ideal location in a select modern development. Constructed in 2018 where the famous Scala Cinema was once located in the heart of Withington village, the apartment offers excellent transport links to Manchester City Centre, the local hospitals and universities, making it perfectly suited to single occupants, couples or professional sharers. Finished to a very high specification with floor to ceiling windows, contemporary bathroom and en-suite shower room and a large open plan living/dining area and kitchen with integrated appliances and granite work surfaces. A magnificent roof terrace accessed via the living room that provides the ideal space for 'Al fresco' dining and entertaining with ample space for tables and chairs. All floors are serviced by a lift and staircase. Furnished. No parking. To view please contact our Didsbury office.

View our Virtual Tour Here - <https://youtu.be/vANW8MnVe3c>

EPC Rating C // Council Tax Band C

Directions

M20 3BP



- Available March
- Two Double Bedrooms
- Two Bathrooms
- Luxury Penthouse Apartment
- South Westerly Facing Balcony
- Ideal for Single Occupants, Couples or Sharers
- Walkable to all Local Amenities
- Withington Village Location
- Council Tax Band C
- EPC Rating C

Postcode - M20 3BP

EPC Rating - C

Floor Area - sq ft

Local Authority - Manchester

Council Tax - C





These particulars are believed to be accurate but they are not guaranteed and do not form a contract. Neither Jordan Fishwick nor the vendor or lessor accept any responsibility in respect of these particulars, which are not intended to be statements or representations of fact and any intending purchaser or lessee must satisfy himself by inspection or otherwise as to the correctness of each of the statements contained in these particulars. Any floorplans on this brochure are for illustrative purposes only and are not necessarily to scale.

Offices also at: Wilmslow, Macclesfield, Hale, Sale, Chorlton, Glossop, Manchester & Salford

757-759 Wilmslow Road, Didsbury Village, Manchester

0161 445 4480

didsbury@jordanfishwick.co.uk
www.jordanfishwick.co.uk